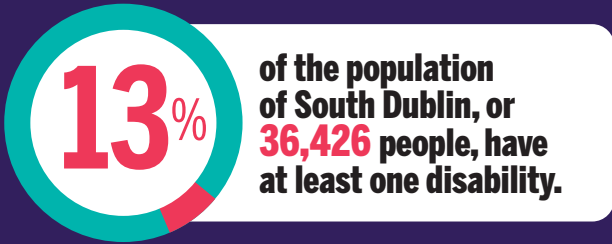




DISABILITY FEDERATION OF IRELAND

# DISABILITY PROFILE: SOUTH DUBLIN<sup>1</sup>



## Type of Disability

People in South Dublin reported having the following types of disabilities and conditions:

**17,168** Difficulties with basic physical activities

**13,590** Difficulty with pain, breathing, or other chronic illness/condition

**8,943** Learning Difficulty

**7,205** Mental health

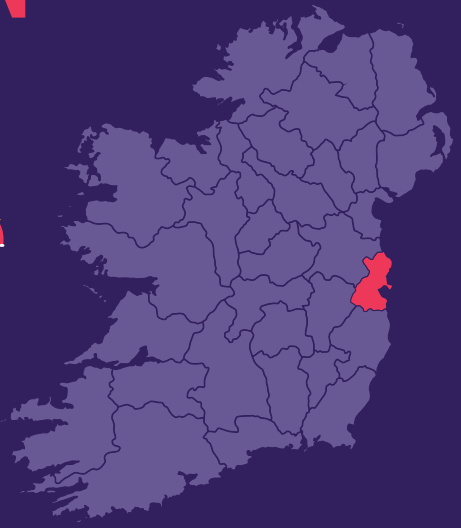
**5,242** Deafness or serious hearing impairment

**4,050** Intellectual Disability

**2,926** Blindness or a serious vision impairment

## AGE Their age profile is:

0-14	4,021	
15-24	3,190	
25-44	7,727	
45-64	10,774	
65+	10,714	



## EDUCATION<sup>2</sup>

In 2016, only 15% of people who have a disability were in education compared to 20% of the general population in South Dublin.<sup>3</sup> For those whose education had finished:<sup>4</sup>

- 35%** did not progress beyond primary education compared to 14% of the general population.
- 14%** had completed upper secondary compared to 17% of the general population.
- 11%** had completed further education compared to 12% of the general population.
- 22%** had completed higher level education compared to 45% of the general population.

## EMPLOYMENT

26% of people who have a disability were at work compared to 56% of the general population.

## TRANSPORT

21% of people who have a disability did not have access to a car or van compared to 10% of the general population.

## HOUSING

22% of people who have a disability lived in social housing compared to 13% of the general population.<sup>5</sup>

1. All statistics in this infographic are based on **Census 2016** data from [www.cso.ie](http://www.cso.ie), along with special tabulations requested by DFI.

2. Primary and less includes no formal education, further education includes vocational/technical certificate and advanced certificate/ completed apprenticeship, higher education includes Higher Certificate, Ordinary/Honours Bachelor, Postgraduate Diploma/Degree, and Doctorate. Data based on special tabulation from CSO and Statbank.

3. % of total education ceased and not ceased and for people aged 15 years and over.

4. Data is for highest level of education completed for people with a disability whose education has ceased.

5. People aged 15 years and over, who were renting from a Local Authority or a Voluntary Body.