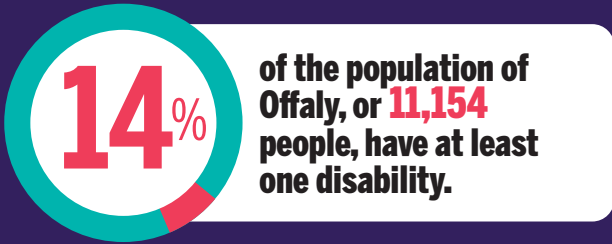




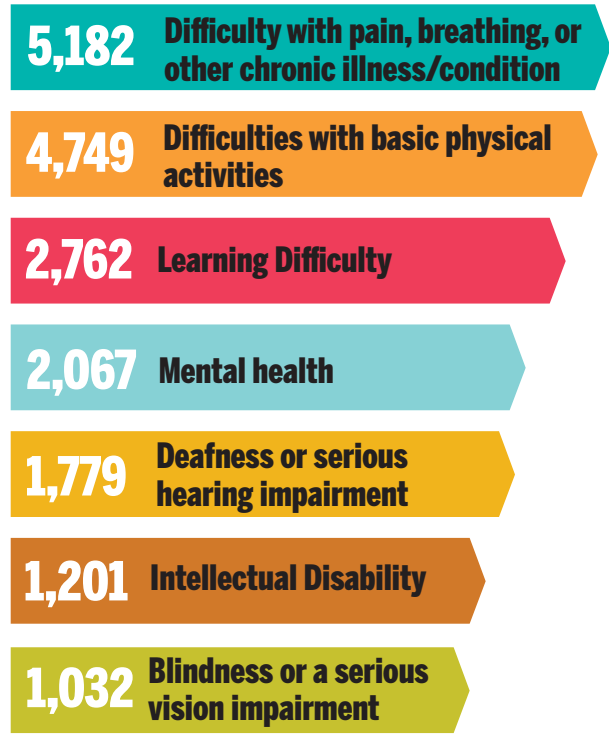
DISABILITY FEDERATION OF IRELAND

DISABILITY PROFILE: COUNTY OFFALY¹



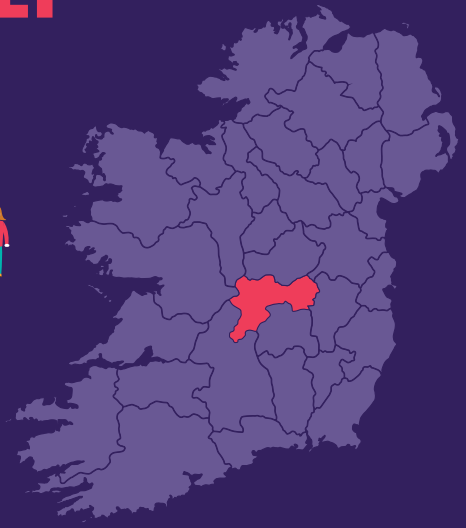
Type of Disability

People in Offaly reported having the following types of disabilities and conditions:



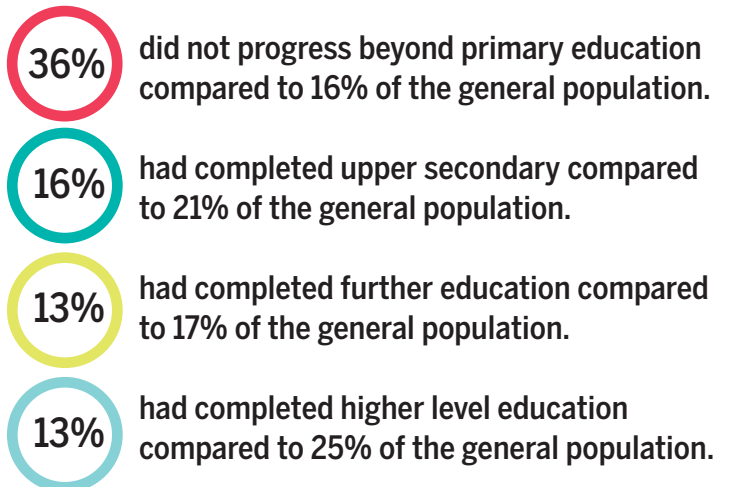
AGE Their age profile is:

0-14	1,189	
15-24	844	
25-44	2,011	
45-64	3,212	
65+	3,898	



EDUCATION²

In 2016, only 11% of people who have a disability were in education compared to 17% of the general population in Offaly.³ For those whose education had finished:⁴



EMPLOYMENT

19% of people who have a disability were at work compared to 50% of the general population.

TRANSPORT

19% of people who have a disability did not have access to a car or van compared to 9% of the general population.

HOUSING

13% of people who have a disability lived in social housing compared to 8% of the general population.⁵

1. All statistics in this infographic are based on **Census 2016** data from www.cso.ie, along with special tabulations requested by DFI.

2. Primary and less includes no formal education, further education includes vocational/technical certificate and advanced certificate/ completed apprenticeship, higher education includes Higher Certificate, Ordinary/Honours Bachelor, Postgraduate Diploma/Degree, and Doctorate. Data based on special tabulation from CSO and Statbank.

3. % of total education ceased and not ceased and for people aged 15 years and over.

4. Data is for highest level of education completed for people with a disability whose education has ceased.

5. People aged 15 years and over, who were renting from a Local Authority or a Voluntary Body.