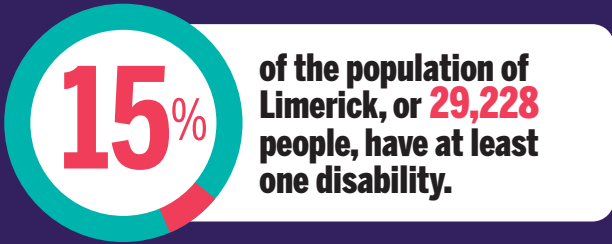




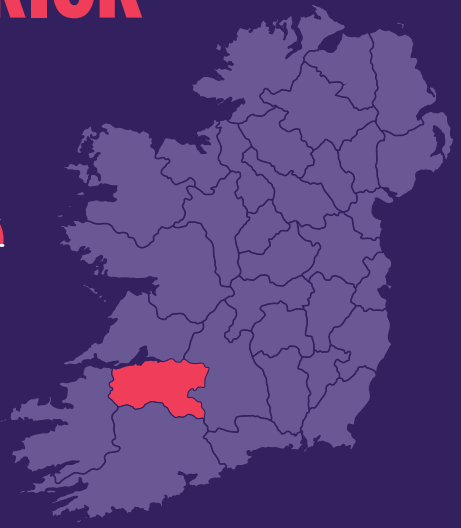
DISABILITY FEDERATION OF IRELAND

# DISABILITY PROFILE: COUNTY LIMERICK<sup>1</sup>



## AGE Their age profile is:

0-14	2584	
15-24	2551	
25-44	5552	
45-64	8527	
65+	10014	



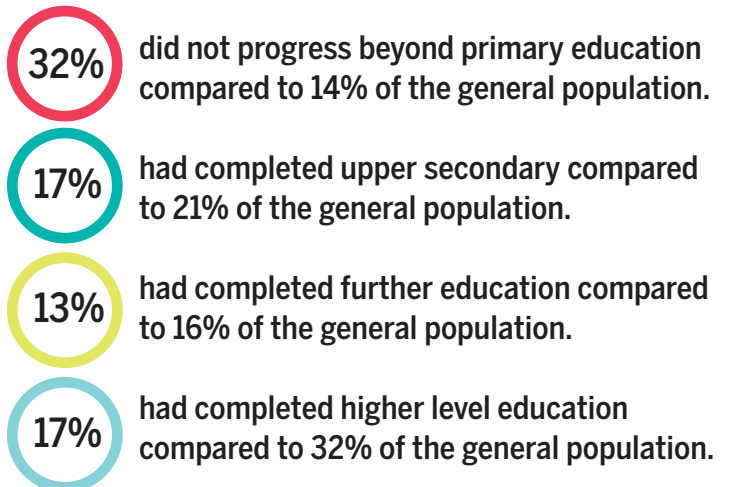
## Type of Disability

People in Limerick reported having the following types of disabilities and conditions:



## EDUCATION<sup>2</sup>

In 2016, only 13% of people who have a disability were in education compared to 20% of the general population in Limerick.<sup>3</sup> For those whose education had finished:<sup>4</sup>



## EMPLOYMENT

19% of people who have a disability were at work compared to 50% of the general population.

## TRANSPORT

25% of people who have a disability did not have access to a car or van compared to 13% of the general population.

## HOUSING

14% of people who have a disability lived in social housing compared to 9% of the general population.<sup>5</sup>

1. All statistics in this infographic are based on **Census 2016** data from [www.cso.ie](http://www.cso.ie), along with special tabulations requested by DFI.

2. Primary and less includes no formal education, further education includes vocational/technical certificate and advanced certificate/ completed apprenticeship, higher education includes Higher Certificate, Ordinary/Honours Bachelor, Postgraduate Diploma/Degree, and Doctorate. Data based on special tabulation from CSO and Statbank.

3. % of total education ceased and not ceased and for people aged 15 years and over.

4. Data is for highest level of education completed for people with a disability whose education has ceased.

5. People aged 15 years and over, who were renting from a Local Authority or a Voluntary Body.