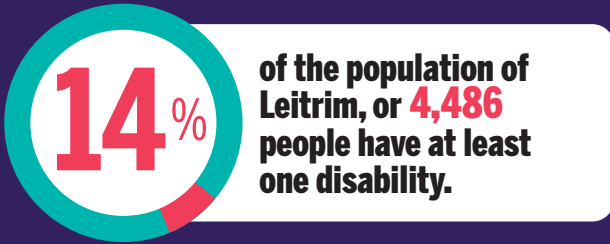




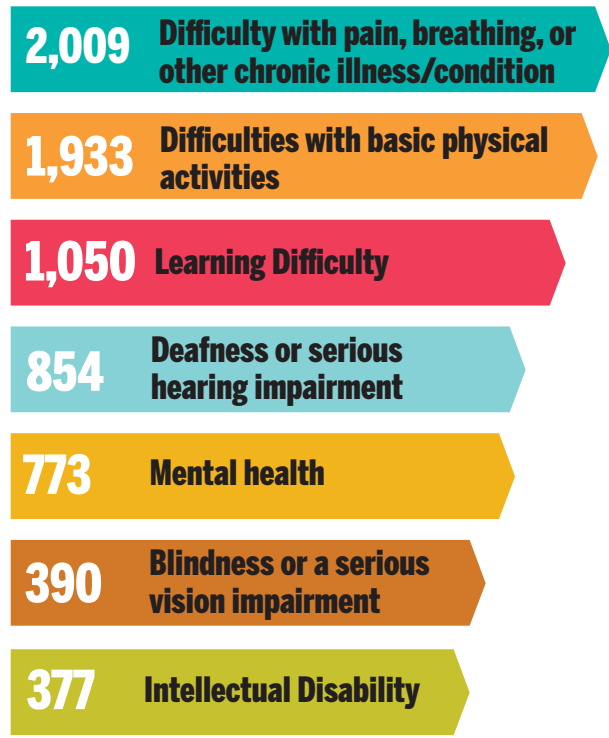
DISABILITY FEDERATION OF IRELAND

# DISABILITY PROFILE: COUNTY LEITRIM<sup>1</sup>



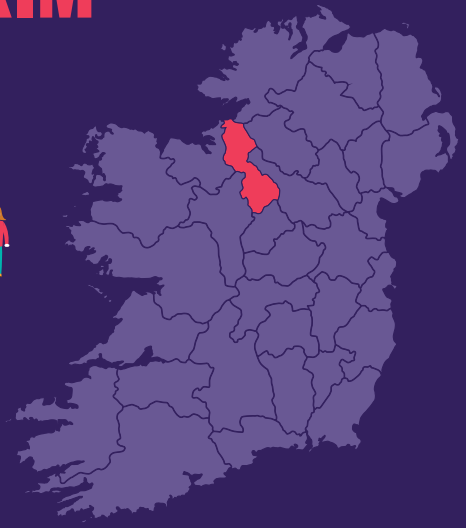
## Type of Disability

People in Leitrim reported having the following types of disabilities and conditions:



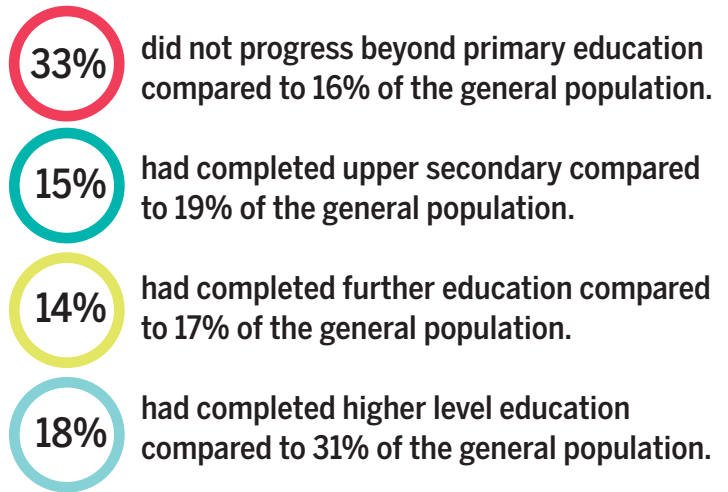
## AGE Their age profile is:

<b>0-14</b>	<b>370</b>	
<b>15-24</b>	<b>303</b>	
<b>25-44</b>	<b>717</b>	
<b>45-64</b>	<b>1,301</b>	
<b>65+</b>	<b>1,795</b>	



## EDUCATION<sup>2</sup>

In 2016, only 11% of people who have a disability were in education compared to 15% of the general population in Leitrim.<sup>3</sup> For those whose education had finished:<sup>4</sup>



## EMPLOYMENT

19% of people who have a disability were at work compared to 51% of the general population.

## TRANSPORT

19% of people who have a disability did not have access to a car or van compared to 8% of the general population.

## HOUSING

13% of people who have a disability lived in social housing compared to 11% of the general population.<sup>5</sup>

1. All statistics in this infographic are based on **Census 2016** data from [www.cso.ie](http://www.cso.ie), along with special tabulations requested by DFI.

2. Primary and less includes no formal education, further education includes vocational/technical certificate and advanced certificate/ completed apprenticeship, higher education includes Higher Certificate, Ordinary/Honours Bachelor, Postgraduate Diploma/Degree, and Doctorate. Data based on special tabulation from CSO and Statbank.

3. % of total education ceased and not ceased and for people aged 15 years and over.

4. Data is for highest level of education completed for people with a disability whose education has ceased.

5. People aged 15 years and over, who were renting from a Local Authority or a Voluntary Body.