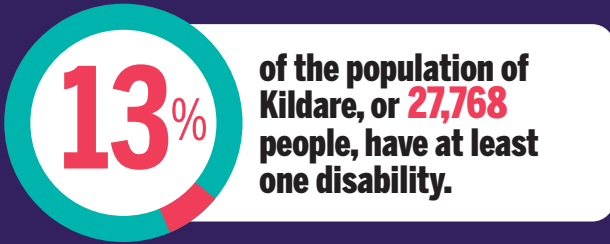




DISABILITY FEDERATION OF IRELAND

# DISABILITY PROFILE: COUNTY KILDARE<sup>1</sup>



## Type of Disability

People in Kildare reported having the following types of disabilities and conditions:

**13,233** Difficulty with pain, breathing, or other chronic illness/condition

**10,197** Difficulties with basic physical activities

**7,319** Learning Difficulty

**5,382** Mental health

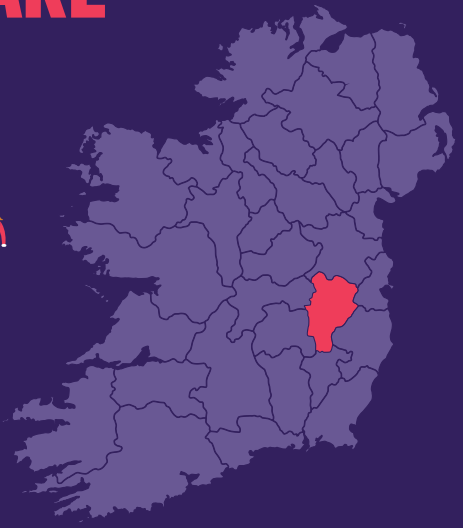
**4,222** Deafness or serious hearing impairment

**3,198** Intellectual Disability

**2,112** Blindness or a serious vision impairment

## AGE Their age profile is:

0-14	3266	
15-24	2774	
25-44	5873	
45-64	8008	
65+	7847	



## EDUCATION<sup>2</sup>

In 2016, only 15% of people who have a disability were in education compared to 19% of the general population in Kildare.<sup>3</sup> For those whose education had finished:<sup>4</sup>

- 27%** did not progress beyond primary education compared to 10% of the general population.
- 18%** had completed upper secondary compared to 20% of the general population.
- 14%** had completed further education compared to 16% of the general population.
- 21%** had completed higher level education compared to 38% of the general population.

## EMPLOYMENT

26% of people who have a disability were at work compared to 57% of the general population.

## TRANSPORT

16% of people who have a disability did not have access to a car or van compared to 7% of the general population.

## HOUSING

11% of people who have a disability lived in social housing compared to 7% of the general population.<sup>5</sup>

1. All statistics in this infographic are based on **Census 2016** data from [www.cso.ie](http://www.cso.ie), along with special tabulations requested by DFI.

2. Primary and less includes no formal education, further education includes vocational/technical certificate and advanced certificate/ completed apprenticeship, higher education includes Higher Certificate, Ordinary/Honours Bachelor, Postgraduate Diploma/Degree, and Doctorate. Data based on special tabulation from CSO and Statbank.

3. % of total education ceased and not ceased and for people aged 15 years and over.

4. Data is for highest level of education completed for people with a disability whose education has ceased.

5. People aged 15 years and over, who were renting from a Local Authority or a Voluntary Body.