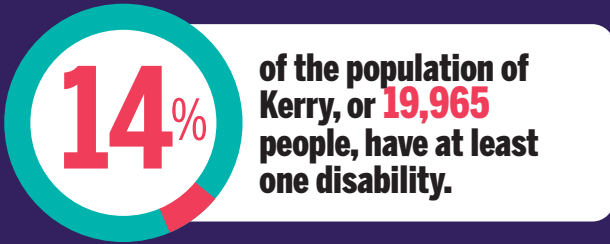




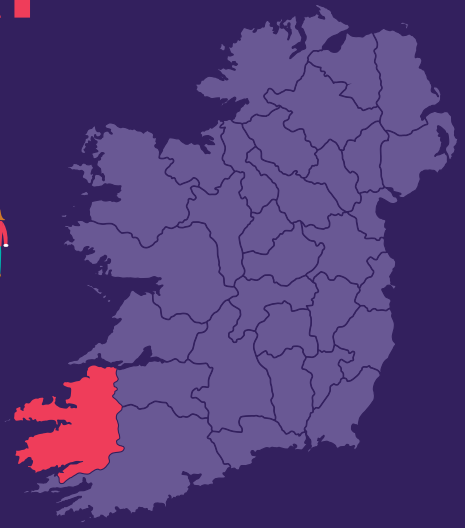
DISABILITY FEDERATION OF IRELAND

DISABILITY PROFILE: COUNTY KERRY¹



AGE Their age profile is:

| | | |
|-------|------|--|
| 0-14 | 1739 | |
| 15-24 | 1516 | |
| 25-44 | 3370 | |
| 45-64 | 5625 | |
| 65+ | 7715 | |



Type of Disability

People in Kerry reported having the following types of disabilities and conditions:

8,688 Difficulties with basic physical activities

8,542 Difficulty with pain, breathing, or other chronic illness/condition

4,778 Learning Difficulty

3,370 Deafness or serious hearing impairment

3,350 Mental health

2,144 Intellectual Disability

1,713 Blindness or a serious vision impairment

EDUCATION²

In 2016, only 12% of people who have a disability were in education compared to 16% of the general population in Kerry.³ For those whose education had finished:⁴

- 32%** did not progress beyond primary education compared to 14% of the general population.
- 17%** had completed upper secondary compared to 20% of the general population.
- 13%** had completed further education compared to 17% of the general population.
- 18%** had completed higher level education compared to 31% of the general population.

EMPLOYMENT

19% of people who have a disability were at work compared to 51% of the general population.

TRANSPORT

22% of people who have a disability did not have access to a car or van compared to 9% of the general population.

HOUSING

14% of people who have a disability lived in social housing compared to 8% of the general population.⁵

1. All statistics in this infographic are based on **Census 2016** data from www.cso.ie, along with special tabulations requested by DFI.

2. Primary and less includes no formal education, further education includes vocational/technical certificate and advanced certificate/ completed apprenticeship, higher education includes Higher Certificate, Ordinary/Honours Bachelor, Postgraduate Diploma/Degree, and Doctorate. Data based on special tabulation from CSO and Statbank.

3. % of total education ceased and not ceased and for people aged 15 years and over.

4. Data is for highest level of education completed for people with a disability whose education has ceased.

5. People aged 15 years and over, who were renting from a Local Authority or a Voluntary Body.