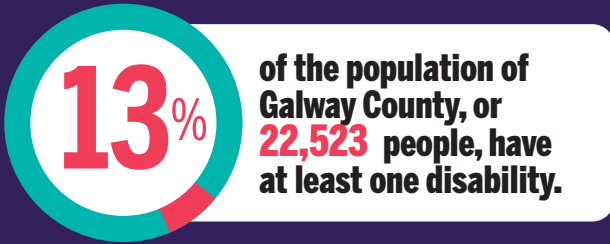




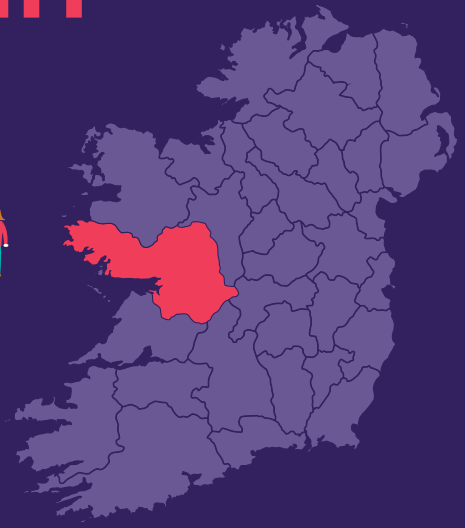
DISABILITY FEDERATION OF IRELAND

DISABILITY PROFILE: GALWAY COUNTY¹



AGE Their age profile is:

0-14	2,052	
15-24	1,620	
25-44	3,798	
45-64	6,241	
65+	8,812	



Type of Disability

People in Galway County reported having the following types of disabilities and conditions:

10,372 Difficulties with basic physical activities

9,702 Difficulty with pain, breathing, or other chronic illness/condition

5,676 Learning Difficulty

4,004 Mental health

3,859 Deafness or serious hearing impairment

2,346 Intellectual Disability

1,917 Blindness or a serious vision impairment

EDUCATION²

In 2016, only 11% of people who have a disability were in education compared to 16% of the general population in Galway County.³ For those whose education had finished:⁴

- 36%** did not progress beyond primary education compared to 15% of the general population.
- 16%** had completed upper secondary compared to 20% of the general population.
- 12%** had completed further education compared to 16% of the general population.
- 19%** had completed higher level education compared to 35% of the general population.

EMPLOYMENT

22% of people who have a disability were at work compared to 54% of the general population.

TRANSPORT

17% of people who have a disability did not have access to a car or van compared to 6% of the general population.

HOUSING

9% of people who have a disability lived in social housing compared to 5% of the general population.⁵

1. All statistics in this infographic are based on **Census 2016** data from www.cso.ie, along with special tabulations requested by DFI.

2. Primary and less includes no formal education, further education includes vocational/technical certificate and advanced certificate/ completed apprenticeship, higher education includes Higher Certificate, Ordinary/Honours Bachelor, Postgraduate Diploma/Degree, and Doctorate. Data based on special tabulation from CSO and Statbank.

3. % of total education ceased and not ceased and for people aged 15 years and over.

4. Data is for highest level of education completed for people with a disability whose education has ceased.

5. People aged 15 years and over, who were renting from a Local Authority or a Voluntary Body.