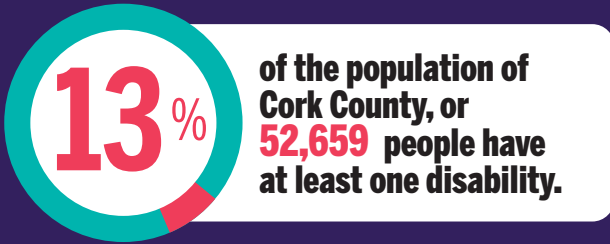




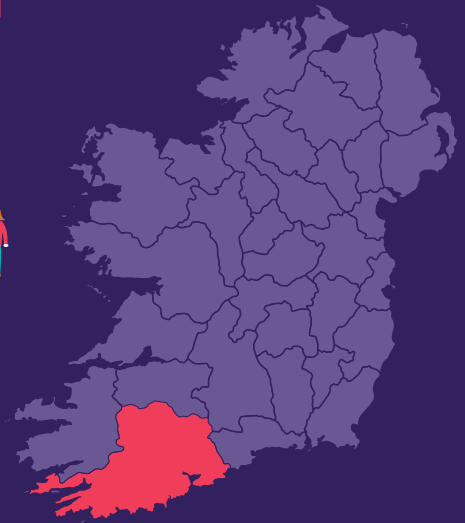
DISABILITY FEDERATION OF IRELAND

DISABILITY PROFILE: CORK COUNTY¹



AGE Their age profile is:

0-14	5,863	
15-24	4,213	
25-44	9,878	
45-64	14,871	
65+	17,834	



Type of Disability

People in Cork County reported having the following types of disabilities and conditions:

23,627 Difficulties with basic physical activities

21,078 Difficulty with pain, breathing, or other chronic illness/condition

13,022 Learning Difficulty

9,774 Mental health

8,352 Deafness or serious hearing impairment

5,784 Intellectual Disability

4,200 Blindness or a serious vision impairment

EDUCATION²

In 2016, only 12% of people who have a disability were in education compared to 17% of the general population in Cork County.³ For those whose education had finished:⁴

- 27%** did not progress beyond primary education compared to 11% of the general population.
- 17%** had completed upper secondary compared to 20% of the general population.
- 10%** had completed further education compared to 18% of the general population.
- 21%** had completed higher level education compared to 36% of the general population.

EMPLOYMENT

24% of people who have a disability were at work compared to 56% of the general population.

TRANSPORT

16% of people who have a disability did not have access to a car or van compared to 6% of the general population.

HOUSING

10% of people who have a disability lived in social housing compared to 6% of the general population.⁵

1. All statistics in this infographic are based on **Census 2016** data from www.cso.ie, along with special tabulations requested by DFI.

2. Primary and less includes no formal education, further education includes vocational/technical certificate and advanced certificate/ completed apprenticeship, higher education includes Higher Certificate, Ordinary/Honours Bachelor, Postgraduate Diploma/Degree, and Doctorate. Data based on special tabulation from CSO and Statbank.

3. % of total education ceased and not ceased and for people aged 15 years and over.

4. Data is for highest level of education completed for people with a disability whose education has ceased.

5. People aged 15 years and over, who were renting from a Local Authority or a Voluntary Body.